

NAME \_\_\_\_\_

SOL SCIENCE REVIEW  
MATTER SOL 5.4  
CELLS AND CLASSIFICATION  
SOL 5.5

- This is NOT an example of matter:
  - a ball
  - \*a sound wave
  - a molecule of air
  - a drop of water
- The smallest unit of matter is the:
  - molecule
  - \*atom
  - compound
- Which can be seen without a microscope?
  - atoms
  - molecules
  - \*neither
- All matter is made up of pure elements or elements which have combined to make other substances. There are over \_\_\_\_\_ known elements.
  - 10
  - \*100
  - 1000
  - one million
- The smallest part of an element is a(n):
  - molecule
  - cell
  - \*atom
- When two or more elements combine chemically to form a NEW substance, the substance is called a:
  - mixture
  - \*compound
  - solution
- The smallest unit of a compound is a(n):
  - atom
  - \*molecule
  - cell
- Water (H<sub>2</sub>O) is a(n):
  - atom
  - \*compound
  - cell
- H<sub>2</sub>O (water) is a compound formed from:
  - \*2 hydrogen atoms and one oxygen atom
  - 2 oxygen atoms and one hydrogen atom.
- Salt (NaCl) is a:
  - atom
  - \*compound
  - cell
- When two substances combine but do not lose their original characteristics, they form a :
  - \*mixture
  - compound
- Air is a \_\_\_\_\_ of many different gases.
  - compound
  - \*mixture
- A \_\_\_\_\_ is a mixture in which one substance dissolves in another.
  - \*solution
  - compound
  - juice
- Sugar dissolved in water is a:
  - solution
  - mixture
  - \*both
- Which of the following is a compound?
  - sodium
  - oxygen
  - \*carbon dioxide
  - hydrogen

16. The smallest indivisible part of an element is:

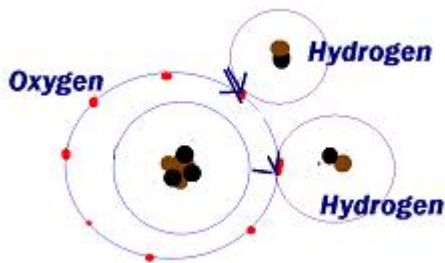
- a. a compound
- b. a solution
- c. \*an atom

17. Anything that has mass and takes up space is:

- a. \*matter
- b. volume
- c. weight
- d. state

18. Which statement is correct?

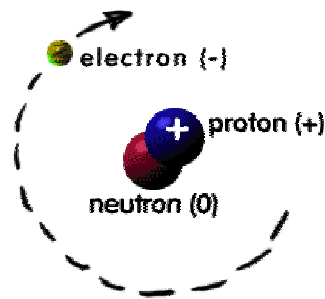
- a. \*Water molecules form from hydrogen and oxygen atoms.
- b. Water atoms form from hydrogen and oxygen molecules.



19. This is an example of a:

- a. water atom
- b. \*water molecule
- c. water cell

IT'S LIKE THIS...



20. Which part of the atom has a negative charge and orbits around the nucleus?

- a. proton
- b. neutron
- c. \*electron

21. Which part of the atom has a positive charge and is part of the atom's nucleus?

- a. neutron
- b. \*proton
- c. electron

22. Which part of an atom is in the nucleus and has no charge?

- a. \*neutron
- b. proton
- c. electron

23. Which is the most basic unit of living things?

- a. a bone
- b. \*a cell
- c. a tissue
- d. an organ

24. Which of the following is not made up of cells?

- a. a wooden table
- b. a flower
- c. a fingernail
- d. \*a snowball

MATCH THE TWO COLUMNS

25. Cell wall

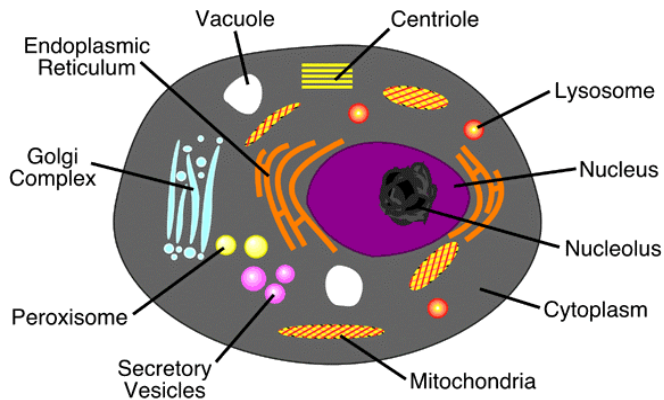
26. Vacuole

27. Nucleus

28. Cell membrane

29. Cytoplasm

30. Chloroplast



31. This cell is a :  
 a. plant cell  
 b. \*animal cell

32. This can't be a plant cell because it doesn't have:

- a. a cell wall
- b. chloroplasts
- c. a large central vacuole
- d. \*all of the above

28 thin layer surrounding the cell that allows water and minerals to pass into and out of the cell

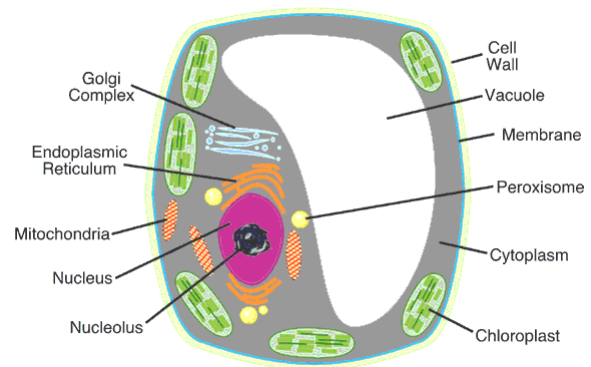
29 jellylike substance that fills the cell

25 tough outer covering of a PLANT cell

27 control center of the cell

26 storage sacs that hold water and other things. Plants cells have one large one and animal cells have many small ones.

30 plant organelle needed for photosynthesis.



33. This is:  
 a. \*a plant cell  
 b. an animal cell

34. What does this cell have that's only found in plants?

- a. a cell wall
- b. chloroplasts
- c. a large central vacuole
- d. \*all of the above

35. An animal classified as an invertebrate does not have a(n):

- a. exoskeleton.
- b. compound eye.
- c. \*backbone.
- d. shell.

36. Which of the following are vertebrates?

- a. \*monkeys, frogs, snakes
- b. jellyfish, beetles, bloodworms
- c. anemones, worms, butterflies
- d. wasps, coral, clams

37. Which of the animals listed below is a vertebrate?

- a. \* lizard
- b. starfish
- c. spider
- d. clam

38. Which of the animals listed below is an invertebrate?

- a. shark
- b. seagull
- c. lion
- d. \*jellyfish

**Many scientists classify all living things into five kingdoms: monera, protista, fungi, plants, and animals.**

39. All organisms in this kingdom make their own food using energy from the sun:

- a. \*plant kingdom
- b. animal kingdom
- c. fungi kingdom
- d. monera kingdom
- e. protist kingdom

40. Organisms belonging to this kingdom are single-celled:

- a. plant
- b. animal
- c. fungi
- d. \*monera

41. The process of using the sun's energy to make food is called:

- a. symbiosis
- b. biotics
- c. \*photosynthesis
- d. mutualism

42. Mushrooms belong to this kingdom:

- a. plant
- b. animal
- c. \*fungi
- d. monera
- e. protista

43. Bacteria belong to this kingdom -

- a. plant
- b. animal
- c. fungi
- d. \*monera
- e. protista

44. Which are producers?

- a. animals
- b. consumers
- c. \*plants
- d. herbivores