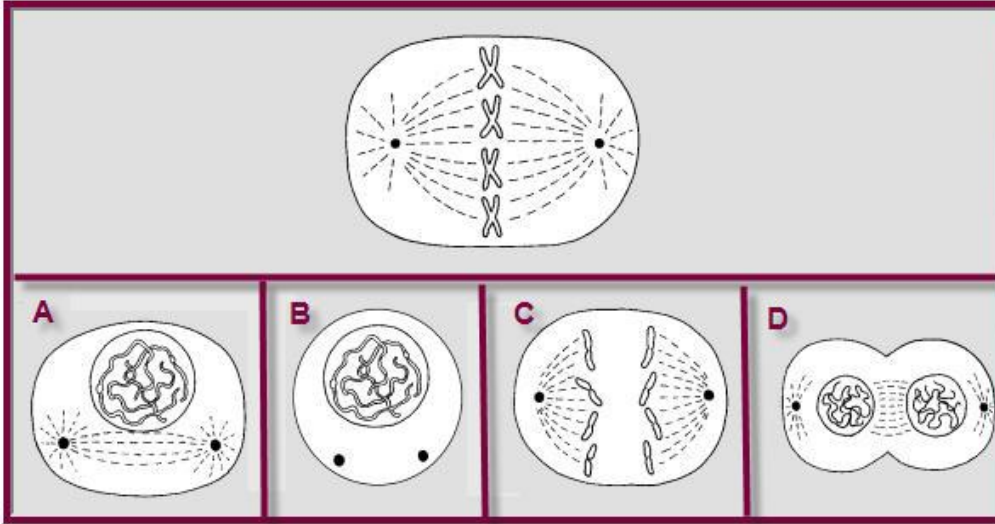


BIO SOL Review 13 - Reproduction - Mitosis, Meiosis (12)



a.  
2. (2006-50) Which phase of mitosis would be seen next?  
A B C D

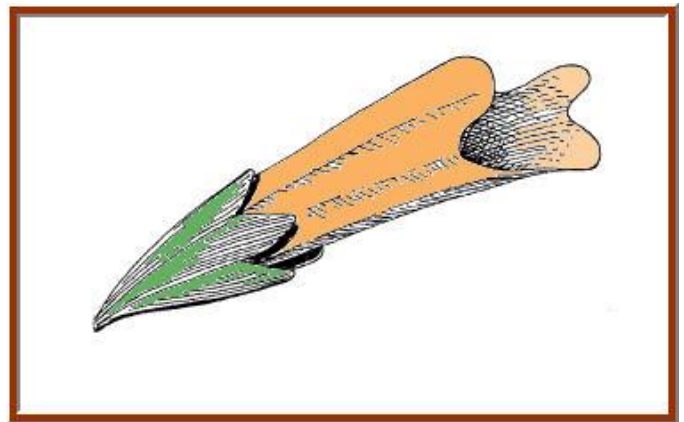
3. (2006-12) Meiosis is the process by which gametes are produced. In which of the following human organs does meiosis occur?  
a. Skin  
b. Pancreas  
c. Liver  
d. Testis

4. (2001-9) The reduction of the chromosome number during meiosis is most important for:  
a. keeping the amount of DNA in the cell at a minimum level  
b. preventing the nucleus from becoming larger with each cell division  
c. maintaining the chromosome number during sexual reproduction  
d. allowing the growth of the cell without increasing the DNA content

5. (2003-36) Which of these types of reproduction provides the most protection to developing offspring of land-dwelling animals? (1 point)  
a. An egg with a leathery shell  
b. An egg in a mass of jelly  
c. An egg carried internally  
d. An egg in an eggshell

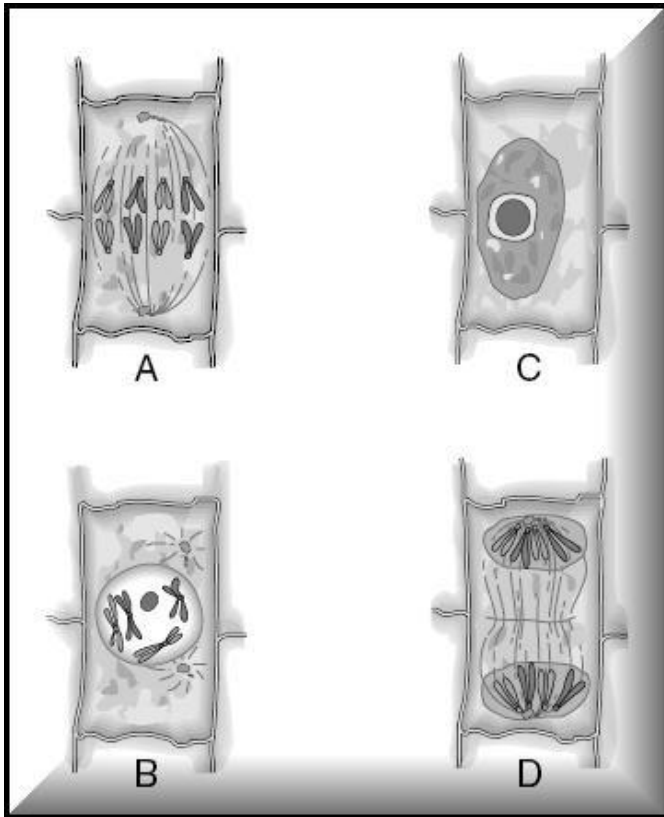
6. (2003-7) The jimsonweed *Datura stramonium*, normally has 12 chromosomes in the body cells. How many chromosomes will an egg cell of the weed have? (1 point)  
a. 6 chromosomes  
b. 12 chromosomes  
c. 24 chromosomes  
d. 18 chromosomes

7. (2004-30) The process of DNA replication is necessary before a cell — (1 point)  
a. codes for RNA molecules  
b. modifies lysosome enzymes  
c. divides into two cells  
d. makes a protein



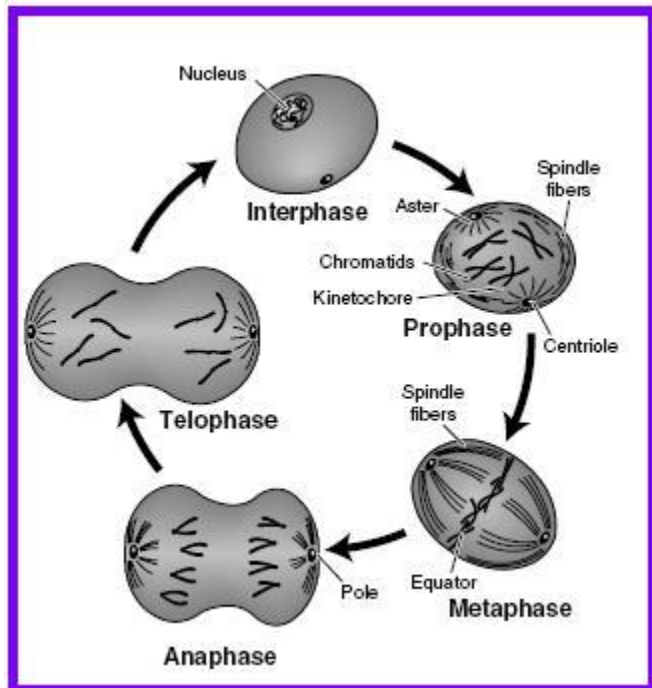
8. (2001-28) A flower with this shape would use what type of pollinator? (1 point)  
a. Mammal  
b. Wind  
c. Rain  
d. Hummingbird

9. (2004-15) The processes of meiosis and fertilization help ensure the survival of the species by providing each generation with the same number of — (1 point)  
a. chromosomes  
b. offspring  
c. gametes  
d. body cells



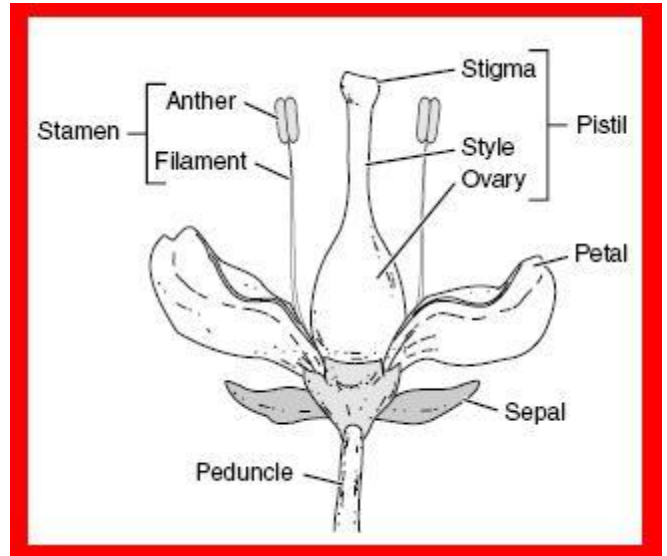
10. (2001-2) What is the correct sequence for plant cell mitosis? (1 point)

- A, B, D, C
- C, B, A, D
- B, A, D, C
- D, C, B, A



11. (2005-10) Which of the following phases is the first step in mitosis? (1 point)

- Prophase
- Telophase
- Metaphase
- Anaphase



12. (2003-44) In which part of the flower does fertilization take place? (1 point)

- Sepal
- Petal
- Stamen
- Pistil

13. (2004-21) In plants, gymnosperms have cones and angiosperms have flowers. Both of these plant structures are specialized for — (1 point)

- water absorption
- photosynthesis
- sexual reproduction
- food production